

Multiply

Sketches by Inga Sempé

kvadrat

Item	No.	Composition	Colours	Page
Curtains				
Fil-à-Fil	5511	64 % LI, 29 % CLY, 7 % REC SE	4	8
Fil	5505	60 % LI, 32 % CLY, 8 % REC SE	8	12
Mash	5522	100 % LI	6	16
Plus	5508	49 % LI, 32 % CO, 19 % HA	5	20
Plus Minus	5510	47 % LI, 32 % CO, 21 % HA	1	24
Rhythm	5517	50 % REC TCS, 50 % TCS	6	26
Twirl	5524	100 % LI	6	30
Inch	5507	100 % TCS	9	34
Lino Net	5526	100 % LI	7	38
Paper	5527	100 % PI	5	42
Sen	5516	100 % TCS	4	46
Touch	5521	60 % LI, 40 % CV	6	50
Twin Stripe	5513	61 % PES FR, 39 % PES	5	54
Union	5525	100 % WO	9	58
Value	5512	59 % CLY, 41 % organic CO	10	62
Volume	5506	83 % TCS, 17 % PES FR	9	66

**Multiply illuminates how small shifts
can make all the difference.**

With *Multiply*, it all starts with the yarn. The collection explores fibres, materials, volumes and colours through visionary manipulations of yarn dyeing, spinning and folding techniques.

The sensuous twists that characterise *Multiply* infuse each design with refined multidimensionality. As the light changes, fine lines and grids emerge and dissolve, colourful hues melt into prismatic nuances, and dense elements dematerialise into transparency.

Disruptive interactions between yarn and archetypal weaving rhythms bring further depth. Tactile patterns, colour gradations and voluminous threads flow across flat surfaces, playing with light and shadow. Simultaneously, horizontal and vertical movement creates a calm, comforting sense of order.

On a fundamental level, sketching through materiality as a way of designing textiles shapes the collection. Reflecting this, *Multiply* integrates *Sketches*, a series of curtains by acclaimed designer Inga Sempé, which translates two-dimensional compositions into rich, three-dimensional materiality.

Subtle interplays between reliefs, yarns and structures recall the delicate pencil and brush strokes of Inga Sempé's artworks. At the same time, by evoking a sense of drawing, they balance graphic sequences with gentle softness.

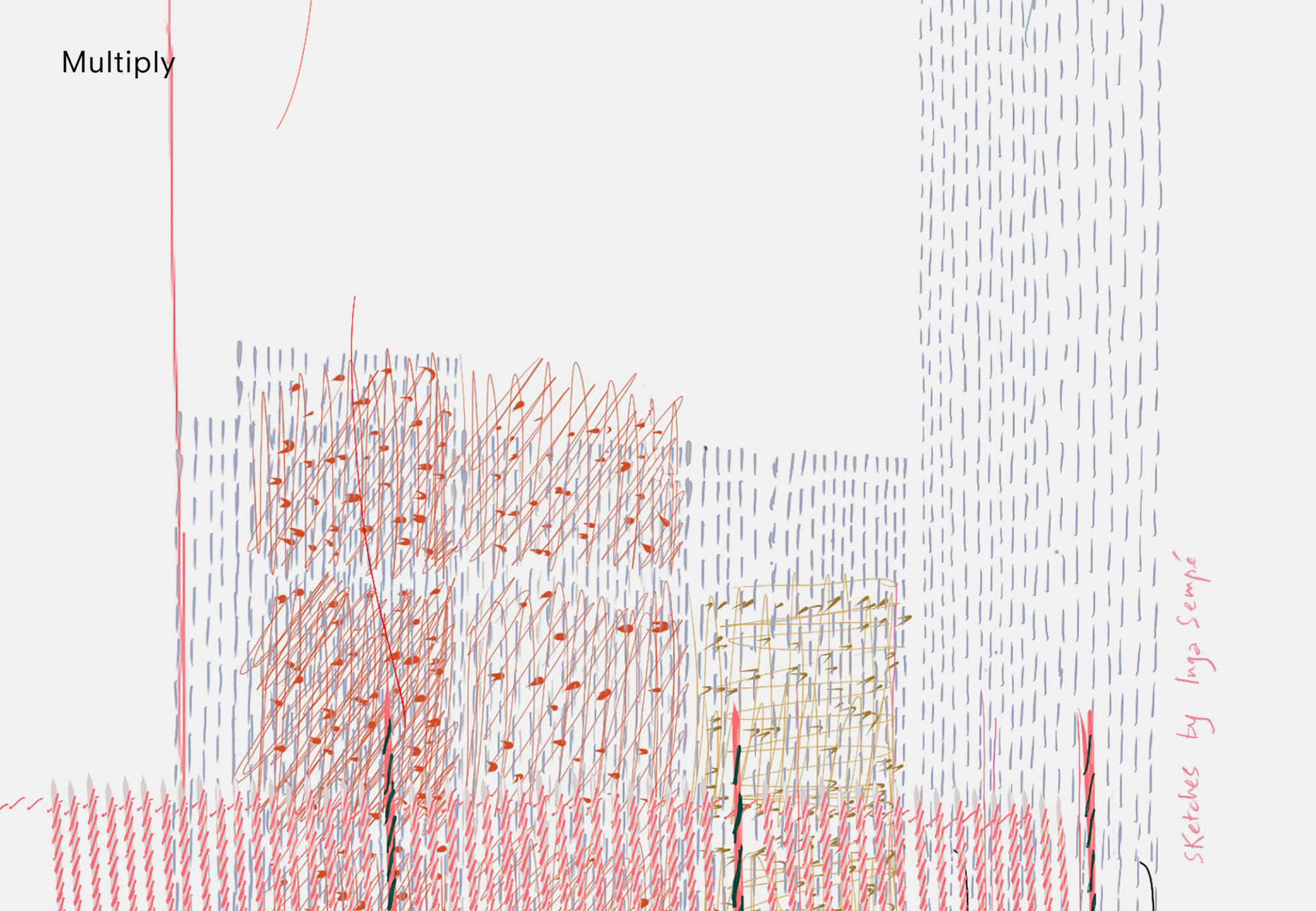
Nuanced blends of responsible materials add another dimension of dynamism. Matt materials like linen and paper bring crisp, granular clarity while shimmering recycled silk and lustrous TENCEL™ LUXE illuminate intricate textural and tonal details.

Inga Sempé: *"I have always liked subtle changes in normal systems. As I walk through the streets of Paris, I look for tiny changes that turn what looks normal into something lively. Like variations in walls or windows, I wanted to insert these subtle shifts into the most classical patterns and weavings. I aimed to define them in light and different ways, playing with the threads themselves."*

Isa Glink: *"Multiply is the result of extensive research into the expression of interwoven yarns. The collection brings a soft, unifying perspective to the multifaceted relationship between yarn, craft and perception."*

The poetic colour scale for *Multiply* juxtaposes neutral atmospheric notes and bolder hues. It offers a curated selection of complementary yet contrasting shades that elevate the experience of spaces, including Black Coal, Cocoa, Emerald, Lilac, Birch, Snow, and Sky. *Multiply* showcases 16 curtains ranging from vibrant plains to the sophisticated graphic designs in the *Sketches* series. It is by Creative Director Isa Glink and team, in collaboration with designer Inga Sempé.

Multiply



Sketches by Inga Sempé

Fil-à-Fil

Fil-à-Fil offers a multifaceted rhythm of intricate details and fine lines that appear as stripes within stripes. Bold and impactful, these tactile elements have a handwoven look referencing original sketches by designer Inga Sempé.

The curtain brings an artisanal feel to the archetypal herringbone construction. The yarns made from linen, TENCEL™ lyocell and recycled silk interact to create sprinkles of contrasting colours that disrupt its tactile, soft surface. The ground matches that of *Fil*, a refined plain in this collection. Consequently, the two designs offer inspirational combination opportunities.

Design by Inga Sempé

300 cm (118") wide

64% linen, 29% TENCEL™ lyocell, 7% recycled silk

4 colours

TENCEL™ is a trademark of Lenzing AG.



Fil-à-Fil

0149 Mineral
0249 Light Wood
0669 Lilac
0969 Emerald



0149



0249



0669



0969

Fil

Fil is a plain with a subtle broken twill weave construction that stands out for its elegant, richly soft drape. Small contrasting dots of recycled silk play across its surface, infusing its expression with gentle graphic granularity. Furthermore, it shares the same ground and colours as striped *Fil-à-Fil*.

The colours for *Fil* juxtapose subtle light neutrals with bolder and saturated darkened tones. They follow an inner logic and project a gentle, comforting sense of balance.

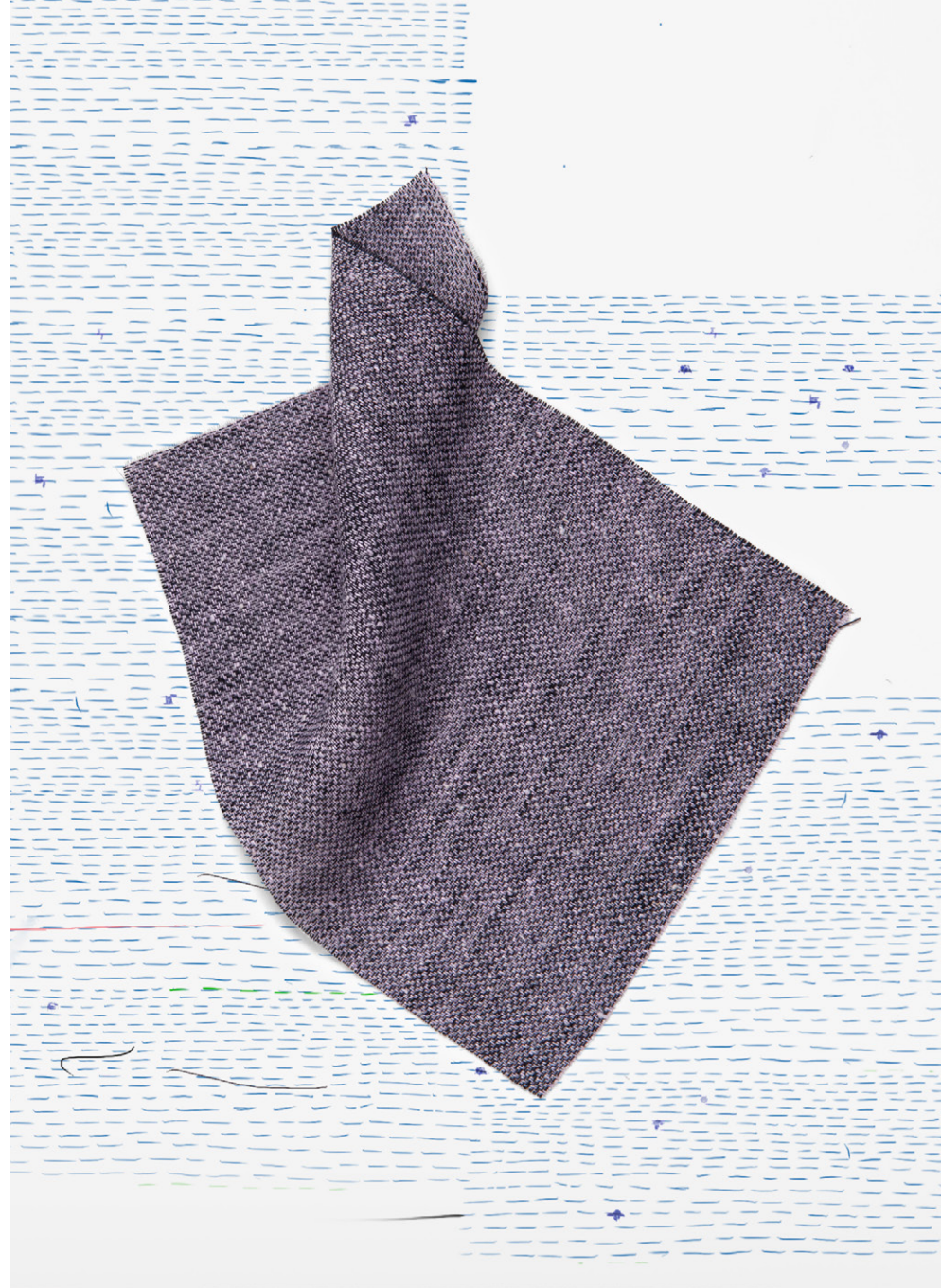
Design by Inga Sempé

310 cm (122") wide

60 % linen, 32 % TENCEL™ lyocell, 8 % recycled silk

8 colours

TENCEL™ is a trademark of Lenzing AG.



Fil

- 0121 Marble
- 0111 Mineral
- 0221 Light Wood
- 0141 Granit
- 0191 Black Coal
- 0961 Emerald
- 0361 Maroon
- 0661 Lilac



0121



0111



0221



0141



0191



0961



0361



0661

Mash

Mash features an airy, irregular Jacquard construction outlined by multidimensional shifts. Woven with fine space-dyed yarns, it transforms the hand-drawn character of Inga Sempé's artworks into subtle materiality, evoking a sense of drawing with crayons.

As *Mash* drapes, it reveals outspoken moiré effects and colourful hues that dissolve into soft non-colours. Simultaneously, the woven elements in its ground ebb and flow, creating various shades of transparency. The curtain's texture adds further depth to its rich colour expression. *Mash* juxtaposes neutral and bolder hues, which recall Inga Sempé's sketches.

Design by Inga Sempé
308 cm (121") wide
100% linen
6 colours



Mash

0101 Snow
0131 Silver Birch
0221 Birch
0731 Sky
0941 Field
0641 Acai



0101



0131



0221



0731



0941



0641

Plus

Plus plays with the perception of vertical and horizontal movement through prisms of texture and colour. It juxtaposes strong lines in contrasting hues to create a multidimensional grid characterised by shifts in tone, weight, and volume. Exceptionally, it is woven with a two-warp system to achieve this distinctive look.

Plus derives its subtle graphic character from combining voluminous contrasting colourful yarns that crisscross and dissolve into its soft ground, featuring natural linen and cotton slub yarns. These tactile elements are reminiscent of pencil strokes and add softness and vitality to the curtain's expression.

Design by Inga Sempé

300 cm (118") wide

49 % linen, 32 % cotton, 19 % hemp

5 colours



Plus

0201 Barley
0821 Splash
0431 Pampas
0631 Coral
0341 Cocoa



0201



0821



0431



0631



0341

Plus Minus

Plus Minus has a gridded structure and offers a play of intricate graphic shifts that emerges from its surface. While it has the purity of a plain, it also integrates subtle horizontal and vertical rhythms that merge into its semi-transparent ground.

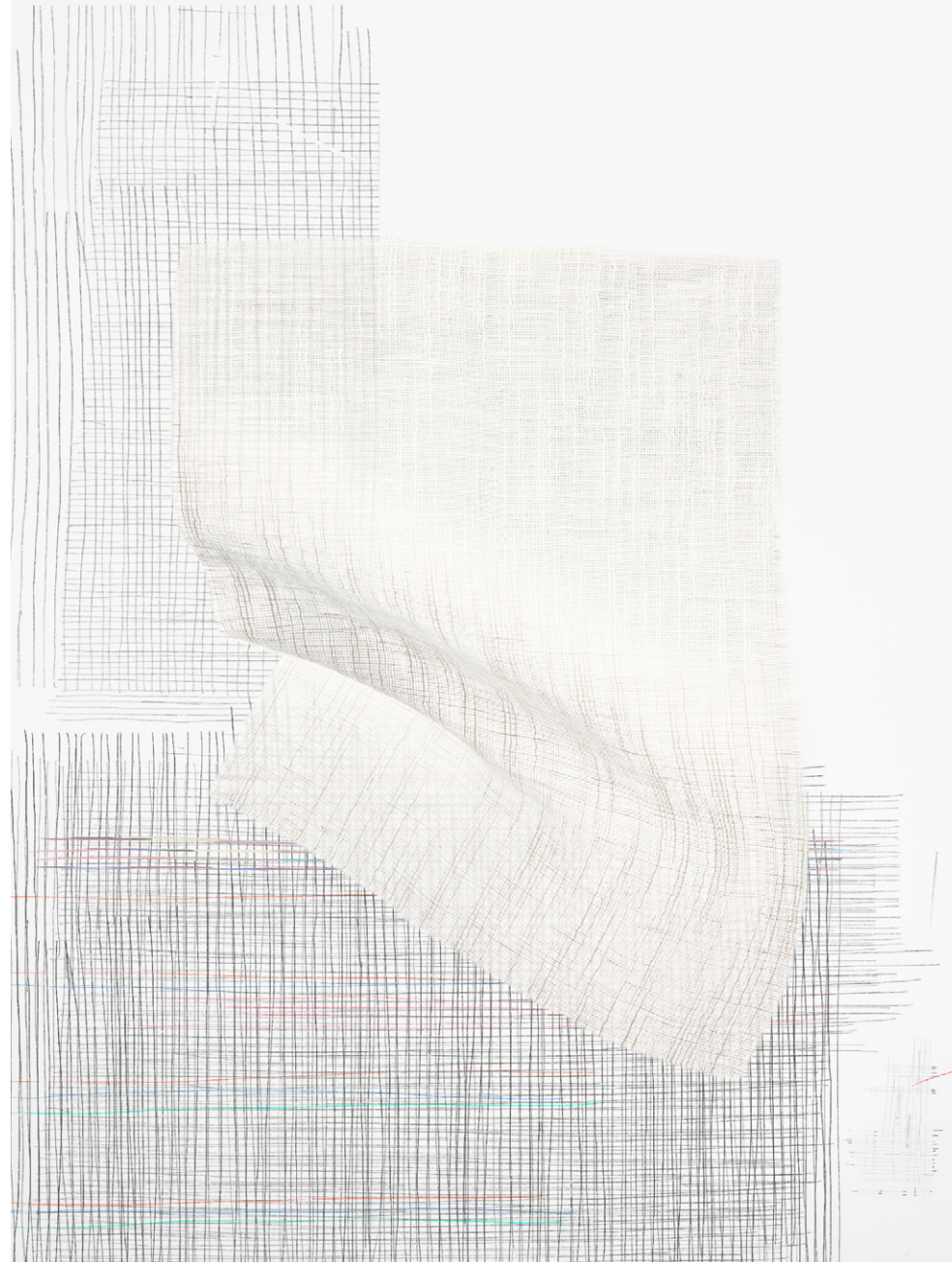
The curtain's distinctive natural look and hand derive from a newly developed yarn, which creates irregular lines of tiny slubs. *Plus Minus* has the same ground as *Plus*, opening versatile combination opportunities.

Design by Inga Sempé

300 cm (118") wide

47 % linen, 32 % cotton, 21 % hemp

1 colour



Rhythm

Flame-retardant *Rhythm* embodies three-dimensional, morse code-like materiality by uniting irregular rhythms of volumes, colours and subtly graphic dots and lines. It drapes to a particularly characterful effect and can be hung vertically or horizontally. Consequently, it offers diverse possibilities to make linear, graphic statements.

Colours gently emerge from the relief-like, Jacquard-woven lines and dots that contrast with *Rhythm*'s ground. In this way, they add to its timeless yet contemporary expression.

Design by Inga Sempé

315 cm (124") wide

50 % recycled Trevira CS, 50 % Trevira CS

6 colours



Rhythm

0105 Sugar
0295 Licorice
0605 Strawberry
0155 Poppy Seed
0355 Biscuit
0965 Peppermint



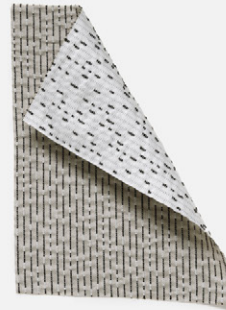
0105



0295



0605



0155



0355



0965

Twirl

Twirl is a heavyweight pure linen with a dense double-sided woven construction. It is crafted with contrasting, thick, two-coloured twisted yarns and space-dyed, colour-matched yarns, which dissolve into its ground structure.

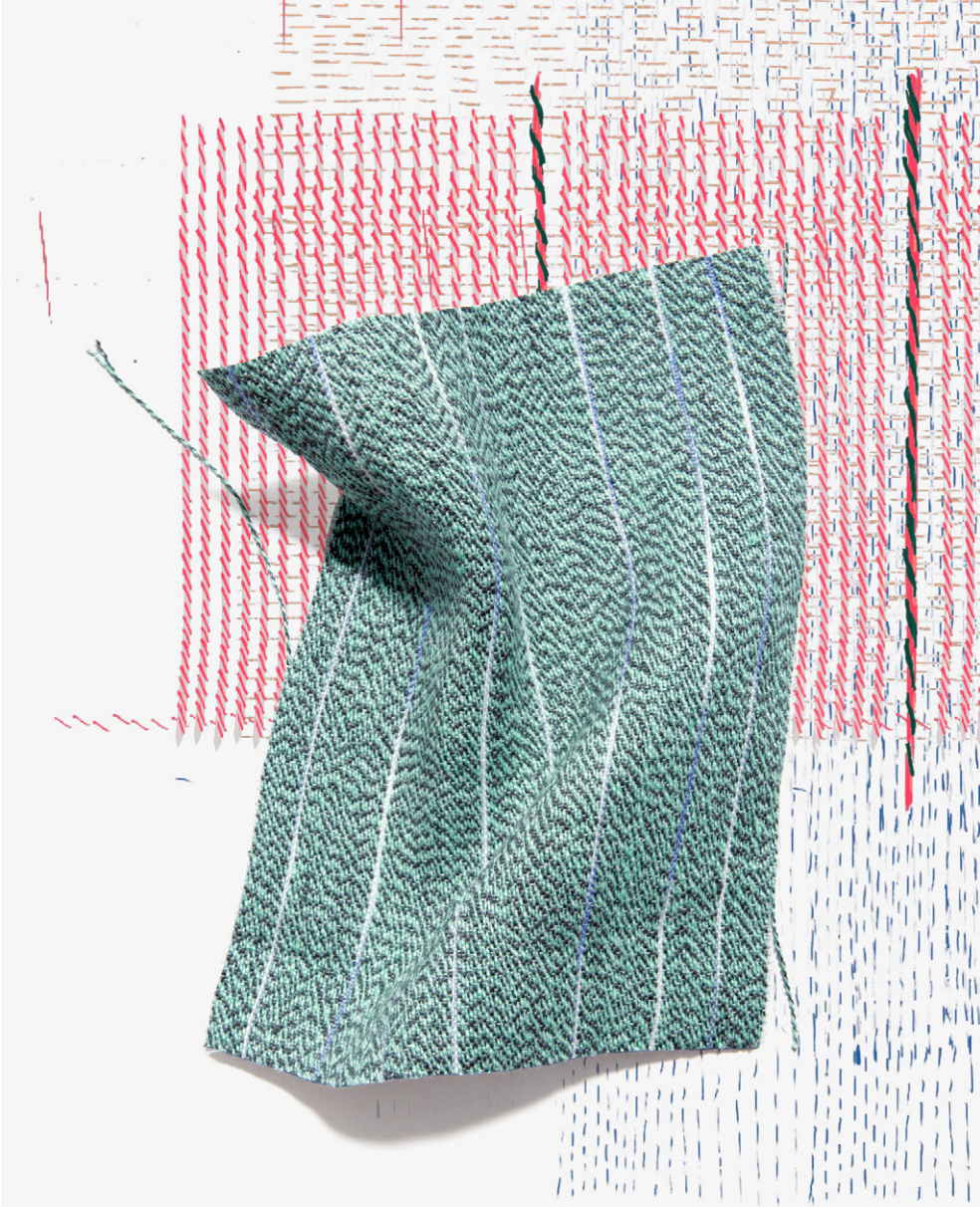
The surprising mix of yarn-making techniques used to create *Twirl* delivers playful sequences of colour shifts. These form the impression of subtle twirling movements, while the curtain's irregular pinstripes, which recall finely shaded brush strokes, add further vitality to the design.

Design by Inga Sempé

314 cm (124") wide

100% linen

6 colours



Twirl

0115 Nebula
0415 Yuzu
0515 Cantaloupe
0645 Magenta
0855 Aloe
0155 Shade



0115



0415



0515



0645



0855



0155

Inch

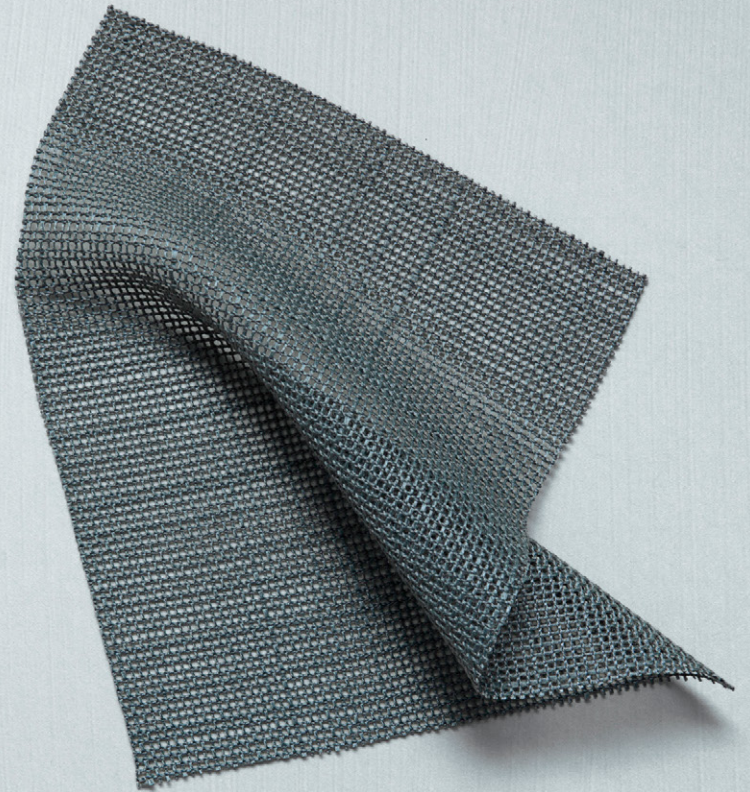
Inch has a tranquil, textural expression that recalls graph paper's sense of rhythm and order. It offers a subtle play of alternating lines and a sensual balance between density and transparency. *Inch* is Leno woven, using a newly developed flame-retardant, slubby spun yarn with a natural expression.

Inch's subtle graphic expression is enhanced by a characterful drape with a rustic yet airy feel. Its palette comprises a scale of atmospheric notes ranging from light to dark.

300 cm (118") wide

100% Trevira CS

9 colours



Inch

- 0100 White
- 0200 Chalk
- 0110 Concrete
- 0220 Clay
- 0130 Pewter
- 0320 Desert
- 0940 Jade
- 0730 Frost
- 0870 Lagoon



0100



0200



0110



0220



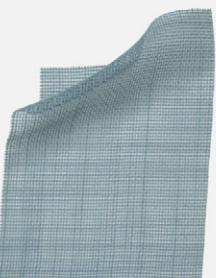
0130



0320



0940



0730



0870

Lino Net

Transparent *Lino Net* combines a knitted look with the sensual traits of a finely spun, pure linen yarn. It derives its soft, refined open-mesh structure and clean, gently shimmering look from a double-yarn folding process and a specific warp set-up.

Lino Net expresses colours in a particularly characterful way. In fluid fashion, these appear to dissolve into the surrounding space. The curtain's palette comprises organic tones carefully calibrated to enhance this eye-catching effect.

295 cm (116") wide

100% linen

7 colours



Lino Net

0100 Light White
0120 Cloud
0230 Linen
0430 Golden Leaf
0850 Agave
0180 Night Fall
0390 Truffle



0100



0120



0230



0430



0850



0180



0390

Paper

Paper is a puristic, semi-transparent plain with a precise structure and the tactile expression of premium paper. It is woven from a Japanese paper yarn created from the pulp of Abaca, a species of banana.

Paper derives its distinctively dry paper-like touch and soft volume from a purely mechanical finishing process borrowed from high-end fashion. Its palette comprises a scale of lightly saturated notes shifting from warm to cool tones, which capture the freshness of writing paper.

150 cm (59") wide

100% paper

5 colours



Paper

0110 Parchment
0200 Abacá
0140 Maché
0800 Celadon
0700 Polar



0110



0200



0140



0800



0700

Sen

Sen unites a play of contrasting lines with a three-dimensional, rippled matt surface and a pleasant cotton-like feel. It brings to mind the calm sense of minimalism associated with Japanese rock gardens.

The colour scale for *Sen* draws on the combed sand and reliefs typically found in zen gardens. It combines light neutrals associated with White Sand, Rock, and Travertine.

304 cm (120") wide

100% Trevira CS

4 colours



0102 White
0202 White Sand
0242 Travertine
0142 Rock



0102



0202



0242



0142

Touch

Touch offers a contemporary interpretation of velvet. It is extremely soft and captures a peach's tactile, silky touch. A subtle salt and pepper effect plays across its surface, infusing the design with relaxed vitality.

Lightly shimmering chenille yarns give *Touch* warmth while cool linen yarns create its elegant colour richness. It comes in chalky notes that underline its relaxed yet sophisticated nature.

295 cm (116") wide
60 % linen, 40 % viscose
6 colours



Touch

0101 Zinc White
0221 Ochre
0631 Vermillion
0731 Azurit
0931 Malachite
0331 Umber



0101



0221



0631



0731



0931



0331

Twin Stripe

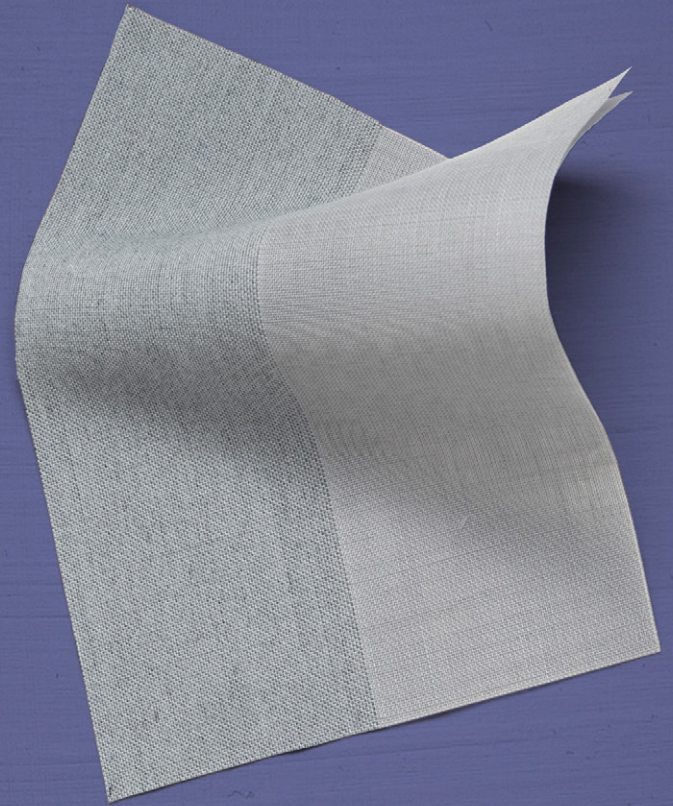
Twin Stripe unites double woven translucent stripes with a moiré effect and a denser single layer of melange stripes. As sunlight shines through the piece-dyed textile, it reveals an elegant dynamic between shifting densities of light and shadow.

The palette for *Twin Stripe* comprises coordinated natural, neutral shades. These hues complement the materials found in thoughtful contemporary homes, such as concrete, wood and stone.

305 cm (120") wide

61% polyester FR, 39% polyester

5 colours



Twin Stripe

0109 Salt
0119 Cloud
0259 Sand
0339 Redstone
0169 Bluestone



0109



0119



0259



0339



0169

Union

Union is woven with subtly contrasting woollen yarns in warp and weft and has an organic, crisscross-textured surface. It unites the exceptional colour depth of a melange with a voluminous hand and sculptural drape.

Consequently, *Union* expresses colours to an iridescent, prismatic effect. Its palette offers a scale of tones that range from light neutrals and atmospheric mineral tones to rich, earthy shades.

295 cm (116") wide

100% wool

9 colours



Union

- 0101 White
- 0111 Moon Dust
- 0821 Slate
- 0931 Sea Grass
- 0321 Rose Grey
- 0151 Grey Ash
- 0371 Brown Ash
- 0541 Dark Amber
- 0391 Dark Sepia



0101



0111



0821



0931



0321



0151



0371



0541



0391

Value

Value brings a fresh perspective to taffetas made from silk and silk-like materials. Soft and dense with a shimmering lustre, it unites exceptionally lustrous TENCEL™ LUXE yarns with matt organic cotton yarns.

Value offers a selection of versatile colours. The organic cotton used in its construction is yarn-dyed in a scale of nuances ranging from light, neutral notes to cloudy and earthy shades. The silky TENCEL™ LUXE yarns come in undyed shades that add cool depth and a curious shift to its expression.

325 cm (128") wide

59 % TENCEL™ lyocell filament, 41 % organic cotton

10 colours

TENCEL™ is a trademark of Lenzing AG.



Value

- 0100 White
- 0200 Ecu
- 0110 Light Pebble
- 0230 Chalk
- 0220 Almond
- 0330 Maple
- 0940 Thyme
- 0950 Silver Pine
- 0170 Steel
- 0140 Silver



0100



0200



0110



0230



0220



0330



0940



0950



0170



0140

Volume

Volume is a semi-transparent flame-retardant acoustic curtain offering a refined granular structure. It derives its matt front side from an interwoven spun yarn and its lustrous backside from a shiny sound-absorbing foil yarn.

Exposed to the light, *Volume* captures a sense of looking through frosted glass. It comes in versatile colours for every room type, from light, airy neutral shades to deep mineral tones. Moreover, it expresses these tones in an almost surreal, luminescent fashion.

Volume delivers class C sound absorption when folded.

300 cm (118") wide

83 % Trevira CS, 17 % polyester FR

9 colours



Volume

0100 Ice
0200 Powder
0240 Seasalt
0500 Blossom
0900 Reed
0800 Aqua
0150 Satellite
0340 Rock
0170 Monument



0100



0200



0240



0500



0900



0800



0150



0340



0170

